

# SPOT

## Location

Amsterdam, The Netherlands

## Client

COD, Duquer

## Initiated

2017

## Completion

2021

## Size

40 000 sqm

## Project Team

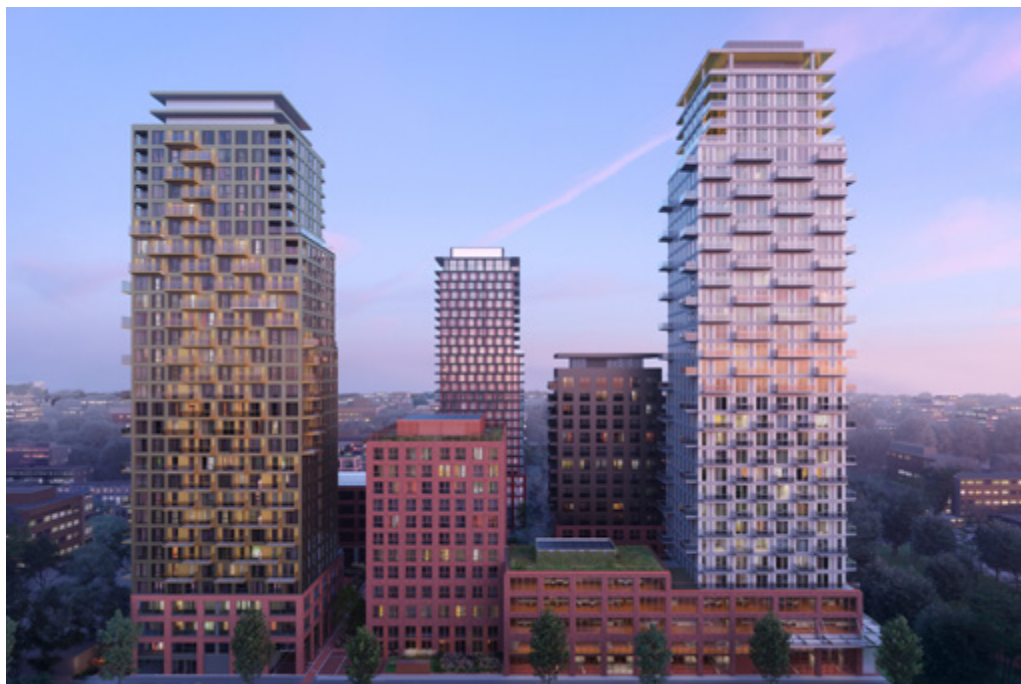
Beatrice Bagnara, Santiago Brignardelli, Katarzyna Ephraim, Paolo Faleschini, Narcisa Ionita, Elmira Jafari, Carlos Jacquet, Kees Kaan, Lianne Klitsie, Edoardo Mancini, Hana Mohar, Jennifer Nam, Vincent Panhuysen, Dikkie Scipio, Aldo Trim, Yiannis Tsoskounoglou

## Photos

Visualization by: PF Visual;  
KAAN Architecten

## Collaborators

DGMR (sustainability, building physics, fire control), Zonneveld (construction advisor), Valstar Simonis (technical installations advisor), Inside Outside (landscape), BOAG (project management)

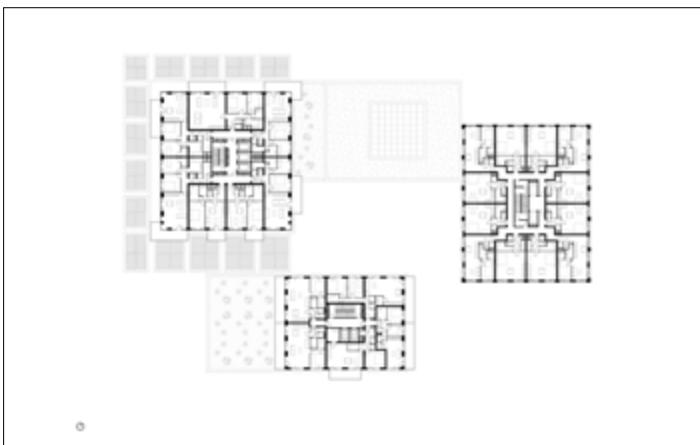
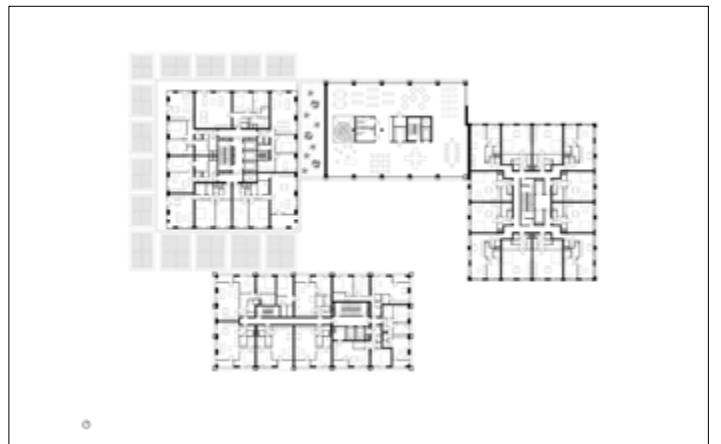
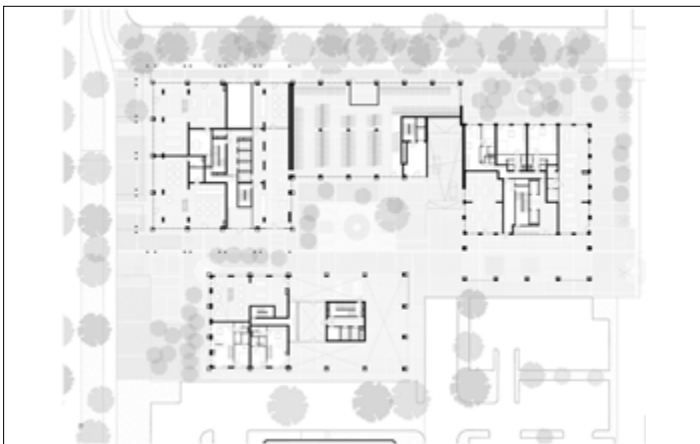


The SPOT project originates from the redevelopment of Hogehilweg in Amsterdam-Zuidoost. The area, currently occupied by office blocks from the 80s, will be transformed into a cosmopolitan part of the city over the next few years. From the beginning, different atmospheres are being established simultaneously, creating both an intimate inner-city environment and an expanding metropolis, the village and the city in one.

The vision, with an underlying strategy of density, is to create a space with urban dynamics, bringing comfort and achieving an alluring stratification. With as strong emphasis on residential atmosphere aside offices and commercial spaces, the programme enables considerable density, resulting in a green inner-city environment.

Varying towers and lower building blocks, SPOT introduces a layer between the human scale, the buildings, and the wider environment. The transformation happening in the area follows the emerging practices in the city.

# SPOT



# SPOT

