

Bottière Chénaie

Location

Nantes, FR

Client

OCDL – Groupe Giboire

Initiated

2013

Completion

2019

Size

17.200 sqm

Project Team

Dante Borgo, Sebastiaan Buitenhuis, Marc Coma, Sebastian van Damme, Paolo Faleschini, Marylène Gallon, Renata Gilio, Narine Gyulkhasyan, Sophie Ize, Kees Kaan, Jan Teunis ten Kate, Wouter Langeveld, Julie Le Baud, Yinghao Lin, Aimee Mackenzie, Elsa Marchal, Vincent Panhuysen, Ismael Planelles Naya, Ana Rivero Esteban, Cécile Sanchez, Dikkie Scipio, Yannick Signani, Christian Sluijmer, Joeri Spijkers

Photos

Sebastian van Damme

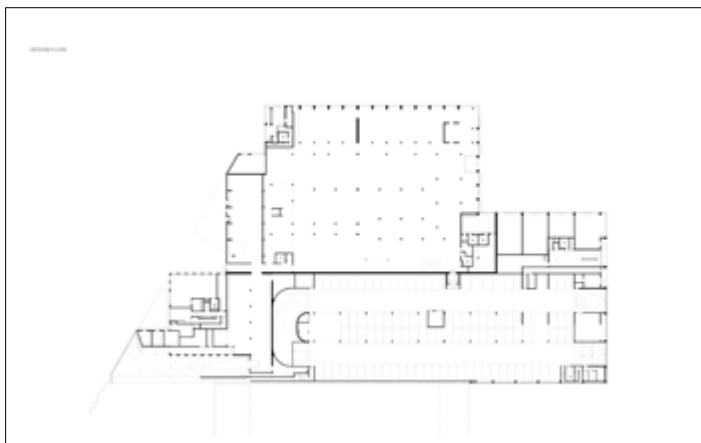
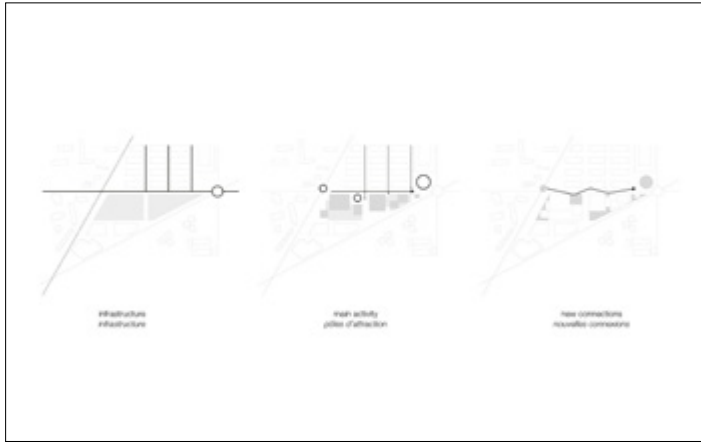
Collaborators

Local architect: Atelier Forny, Nantes
Urban planning: Pranas-Descours Architect & Associates, Atelier Bruel Delmar

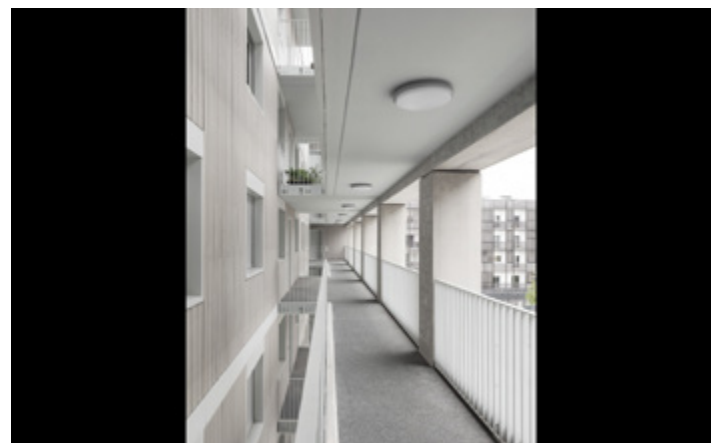
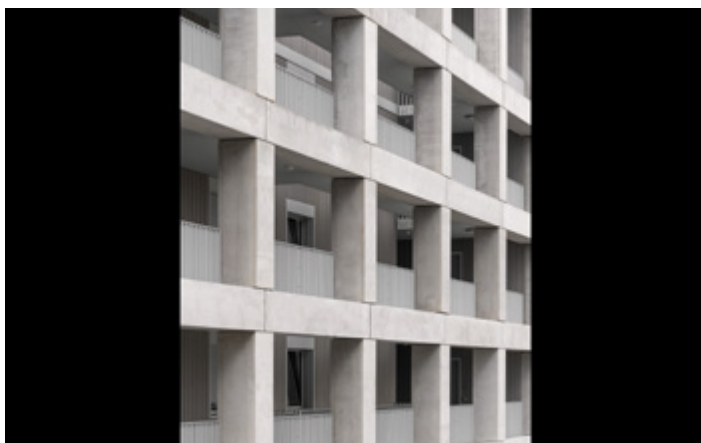
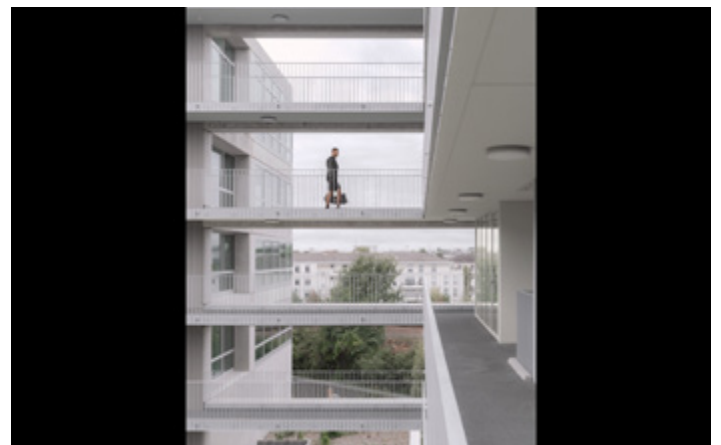
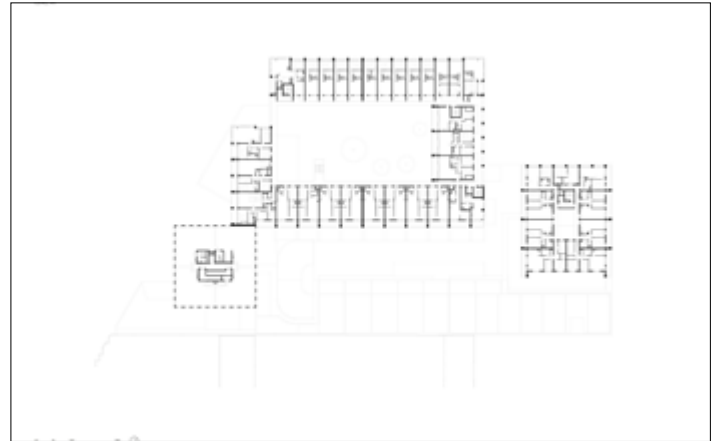
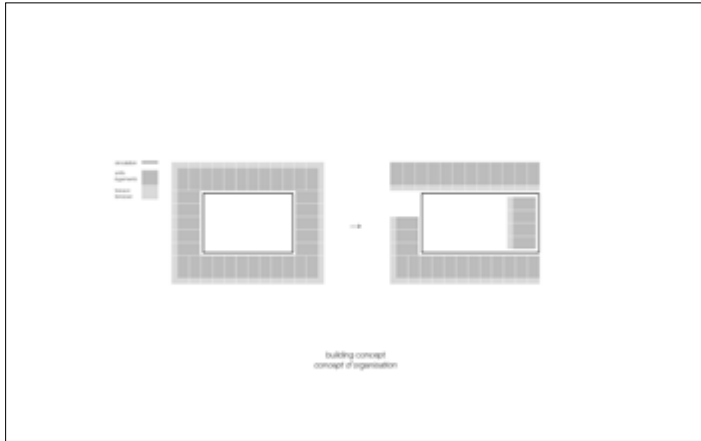


Bottière Chénaie is a compact mixed-use building nestled within the eponymous district in the north-eastern Nantes, encircled by major traffic infrastructures. The project proposes a balanced composition of volumes with simple massing, enriched by concrete post-and-beam facades that generate large openings and fully glazed corners. The building structure features a multifunctional plinth, composed of commercial spaces, a supermarket and a car park. Above this base rise two 5-storey residential blocks counting 172 apartments. The larger housing volume, dedicated to market-rate housing, unfolds around a spacious courtyard planted with trees, where external walkways overlooking the green surroundings provide access to the dual aspect apartments. The second volume accommodates social housing apartments, which, according to their position, benefit from a double orientation, different typology of loggias and look out towards the city. Lastly, to the south-west, the office block, organized around a central core, reinforces the volume juxtaposition and completes the new urban landscape.

Bottière Chénaie



Bottière Chénaie



Bottière Chénaie

