

Amsterdam Courthouse

Location

Parnassusweg 280,
Amsterdam, The Netherlands

Client

Rijksvastgoedbedrijf

Initiated

2016

Completion

2020

Size

60.000 sqm

Project Team

Michael Baas, Beatrice Bagnara, Sjoerd Boomars, Koen Bosman, Dennis Bruijn, Sebastiaan Buitenhuis, Robin Cals, Jana Culek, Sebastian van Damme, Marten Dashorst, Marten Dashorst, Luuk Dietz, Cecilia Dobos, Ana Rivero Esteban, Paolo Faleschini, Raluca Firicel, Michael Geensen, Lisa Goes, Narine Gyulkhasyan, Thomas Hayat, Martine Huijsmans, Marlon Jonkers, Kees Kaan, Lianne Klitsie, Jasmijn Kok, Moritz Kuhl, Marco Lanna, Antony Laurijsen, Yinghao Lin, Johandry Martina, Marija Mateljan, Martina Margini, Julian O'Neale, Laura Ospina, Vincent Panhuysen, Kevin Park, Dikkie Scipio, Claudio Zampaglione
External team:
Teun van Dooren (ABT), Siebe Bontekoe (ABT), Martijn Schuil (EGM)

Collaborators

Consortium NACH:
Macquarie Capital: investor
ABT: engineering
DVP: management
KAAN Architecten: architect and interior architect
Heijmans: general contractor
Facilicom: maintenance & operation

Structural engineering, geotechnics, building physics, MEP engineering, fire safety, acoustics, security: ABT
Parking: Wim van Vlierden
Landscape design: Simona Serafino Landscape Architect
Roof and roof safety design: Kiwa BDA
Metal stud wall consultant: Saint-Gobain Gyproc

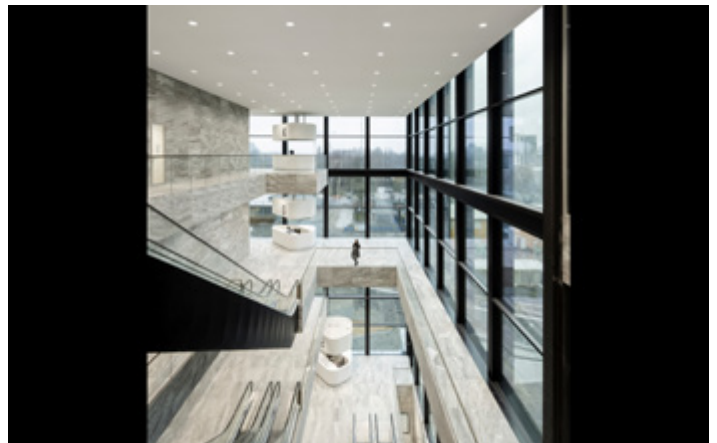
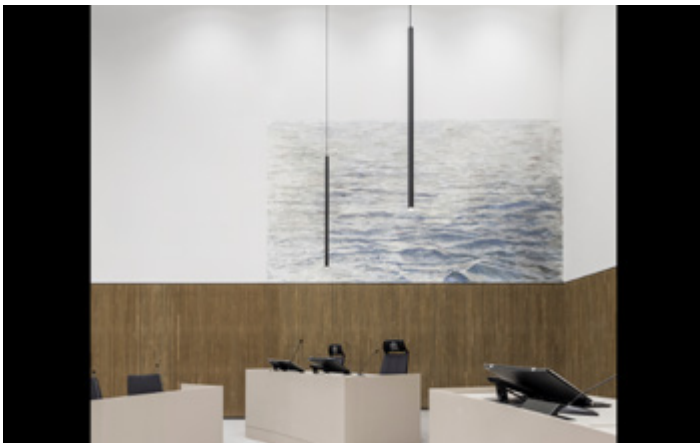
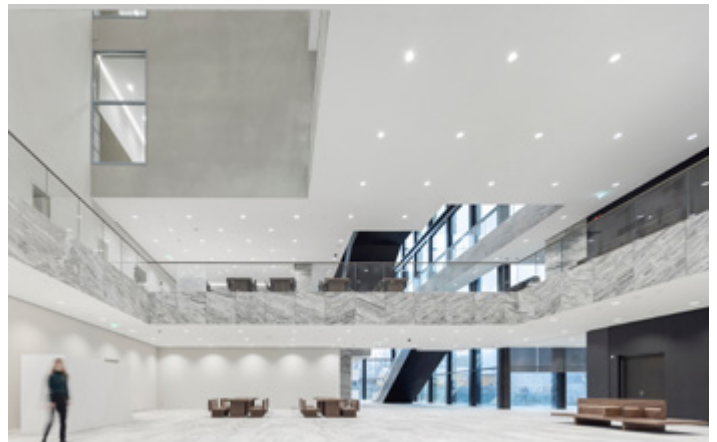
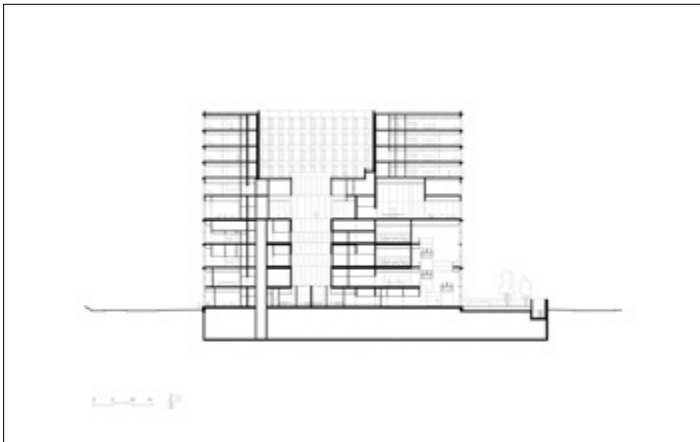
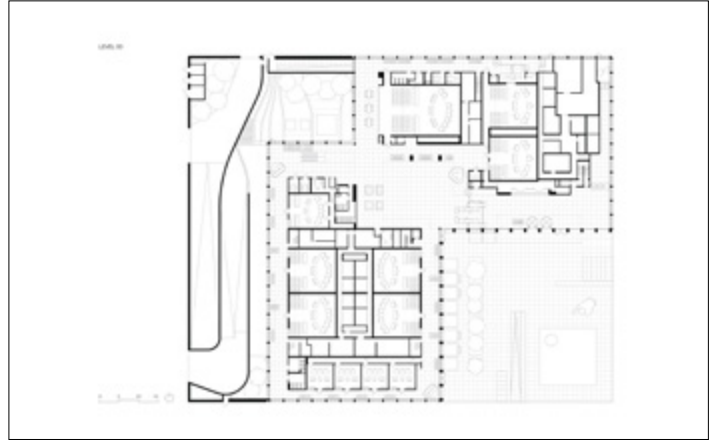
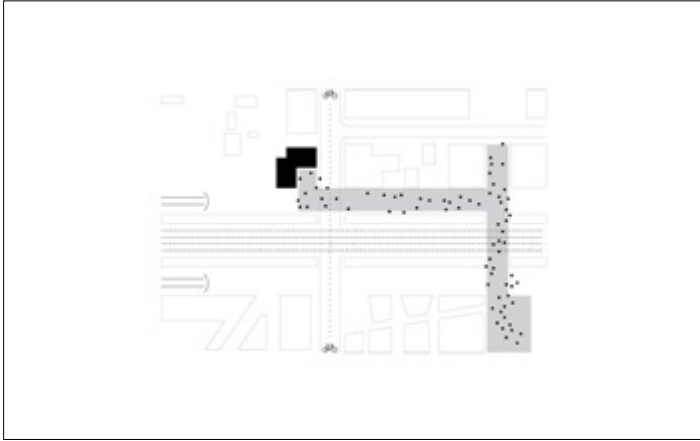
Photography

Fernando Guerra FG+SG

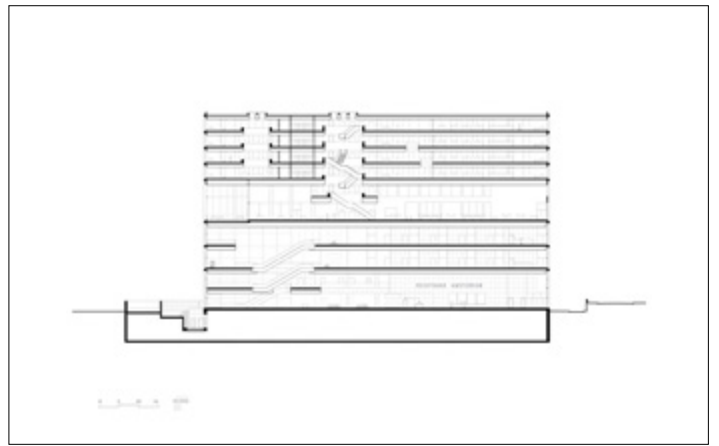
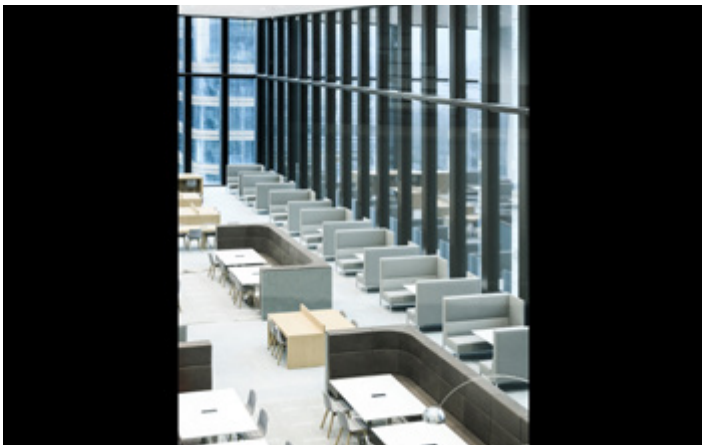
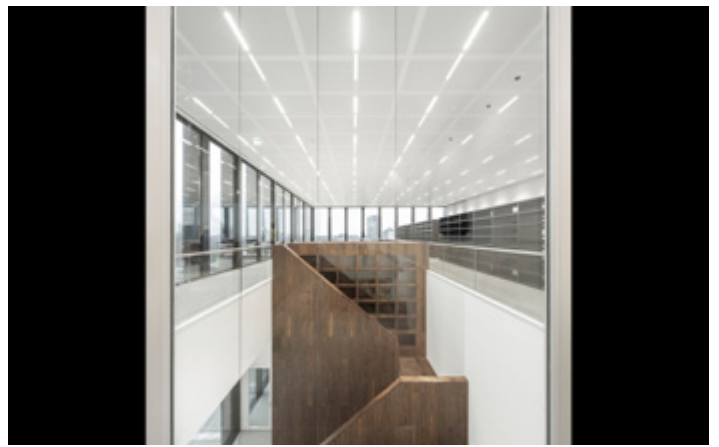
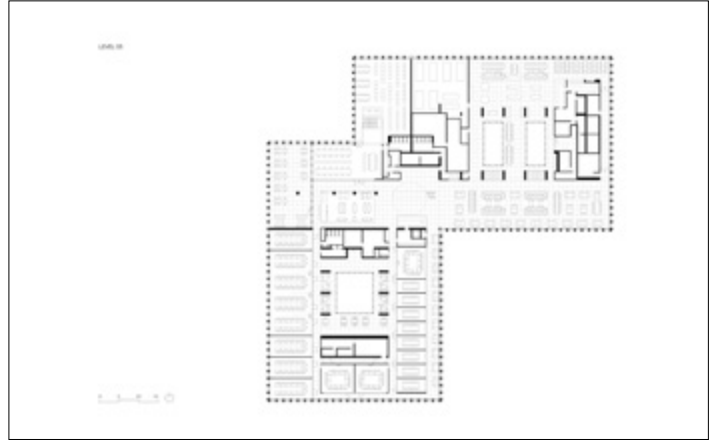


Located in the up-and-coming Zuidas district, the new Amsterdam Courthouse exudes approachable authority as a stately yet inviting institution for public discourse. A vast square in front of the 50-meter-high building offers an unobstructed view to the lower floor dedicated to the public area through large windows. Visitors are welcomed into the ground floor central foyer, equipped with reception desks and a cafeteria. Rising upward, the courtrooms unfold, surrounded by spacious foyers. The highest floors are connected through a grand circular staircase, giving way to offices and judges' chambers set around green indoor and outdoor courtyards. Meanwhile, the detention cell area for the defendants is located under the building with separate pick-up and drop-off ramps. The Courthouse is horizontally divided into 3 greater sections to facilitate the separation of its functions and efficient circulation of employees, judges and visitors within its structure. As the public makes its way up from the entrance square, the lawyers and judges trickle down from their chambers at the crown of the building. Most open and public areas feature large openings on the lower floors, directly connected to the public square, and get progressively smaller and tailored from collective to individual scale as the nature of work becomes more confidential and private.

Amsterdam Courthouse



Amsterdam Courthouse



Amsterdam Courthouse

